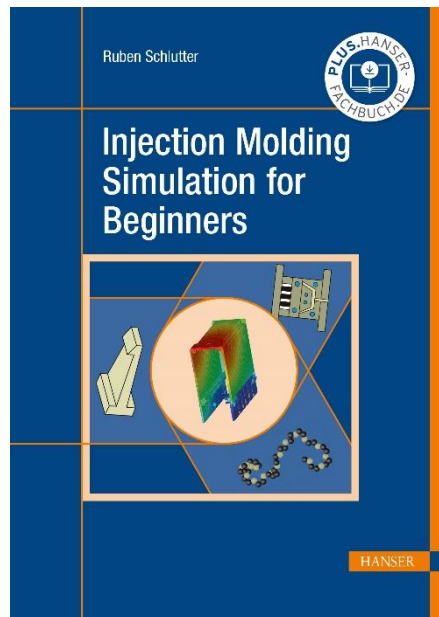


HANSER



Sample Pages

Injection Molding Simulation for Beginners

Ruben Schlutter

Print-ISBN: 978-1-56990-926-3

E-Book-ISBN: 978-1-56990-927-0

For further information and order see

www.hanserpublications.com (in the Americas)

www.hanser-fachbuch.de (outside the Americas)

© Carl Hanser Verlag, München

Contents

| | |
|--|-----------|
| Preface | IX |
| The Author | XI |
| 1 Overview of Finite Elements Analysis | 1 |
| 1.1 Introduction | 1 |
| 1.2 Applications of Finite Elements Analysis | 2 |
| 1.3 Basics of Model Building | 4 |
| 1.3.1 Requirements Imposed on Models | 5 |
| 1.3.2 Methods of Model Building | 5 |
| 1.3.3 Requirements Imposed on the Model Builder | 7 |
| 1.3.4 Model Validation and Model Verification | 9 |
| 1.4 Finite Elements Analysis | 11 |
| 1.5 Basic Rules for the Correct Use of FEA | 12 |
| 1.5.1 Sources of Error | 13 |
| 1.5.2 Build-up of the Mesh | 13 |
| 1.5.3 Accuracy of the Results | 15 |
| 2 Injection Molding Simulation | 19 |
| 2.1 Introduction | 19 |
| 2.2 Convenient Time Points for Injection Molding Simulations | 20 |
| 2.3 Workflow of an Injection Molding Simulation | 24 |
| 2.4 Mesh Design and Model Generation | 27 |
| 2.4.1 Plastic-compatible design of the molded part | 27 |
| 2.4.2 Layout of the Runner System | 34 |
| 2.4.4 Basics of Fluid Mechanics | 44 |

| | | |
|---------|--|-----|
| 2.4.5 | Mesh Design | 56 |
| 2.4.6 | Evaluation of the Mesh Quality | 60 |
| 2.4.6.1 | Mesh Quality in Moldex3D | 64 |
| 2.4.6.2 | Mesh Quality in Autodesk Moldflow Insight | 77 |
| 2.4.6.3 | Mesh Quality in CADMOULD | 100 |
| 2.4.6.4 | Conclusion | 113 |
| 2.5 | Modeling of the Injection Molding Process | 113 |
| 2.5.1 | Compact Injection Molding | 114 |
| 2.5.2 | Multi-component Injection Molding | 124 |
| 2.5.3 | Sandwich Injection Molding | 127 |
| 2.5.4 | Gas-assisted Injection Molding | 128 |
| 2.5.5 | Compression Molding | 129 |
| 2.5.6 | Thermoplastic Foam Injection Molding | 131 |
| 2.5.7 | Reactive Injection Molding with Thermosets | 133 |
| 2.5.8 | Approaches to Numerical Simulation of Melting Behavior | 135 |
| 2.6 | Basics of Material Data | 137 |
| 2.6.1 | Structure of Plastics | 138 |
| 2.6.2 | Rheological Behavior of a Thermoplastic Melt | 140 |
| 2.6.3 | The p-v-T Chart | 147 |
| 2.6.4 | Measurement of the Thermal Parameters | 151 |
| 2.6.5 | Specific Heat Capacity | 155 |
| 2.6.6 | Thermal Conductivity | 157 |
| 2.6.7 | Coefficient of Thermal Expansion | 160 |
| 2.6.8 | Mechanical Properties | 161 |
| 2.6.9 | Orientation Effects | 162 |
| 2.6.10 | Crystallization of Plastics | 168 |
| 2.6.11 | Material Selection for Plastic Molded Parts | 171 |
| 2.7 | Quality of Injection Molding Simulations | 172 |
| 2.8 | Results Interpretation | 176 |
| 2.8.1 | Filling Pattern | 177 |
| 2.8.2 | Flow Front Temperature | 188 |
| 2.8.3 | Temperature Distribution in the Molded Part | 189 |
| 2.8.4 | Pressure Distribution in the Molded Part | 191 |

| | | |
|----------|--|------------|
| 2.8.5 | Shear Rate in the Part | 193 |
| 2.8.6 | Shrinkage of the Molded Part | 194 |
| 2.8.7 | Fiber Orientation in the Molded Part | 195 |
| 2.8.8 | Warping of the Molded Part | 195 |
| 2.8.9 | Cooling of the Molded Part | 197 |
| 2.8.10 | Evaluation by Means of Automated Variant Analysis | 199 |
| 3 | Pressure Losses in the Injection Molding Process | 205 |
| 3.1 | State of the Art | 205 |
| 3.2 | Process Measurement Technology | 211 |
| 3.2.1 | Pressure Sensors | 212 |
| 3.2.2 | Temperature Sensors | 215 |
| 3.2.3 | Volumetric Flow Sensors | 217 |
| 3.2.4 | Setting Up a Measurement Environment | 219 |
| 3.3 | Performing Injection Molding Tests | 221 |
| 3.3.1 | Plastic Materials Used | 221 |
| 3.3.2 | Preparations for the Injection Molding Tests | 221 |
| 3.3.3 | Evaluation of the Injection Molding Tests | 223 |
| 3.4 | Performing Injection Molding Simulations | 227 |
| 3.4.1 | Design of the Simulation Model | 227 |
| 3.4.2 | Analysis of the Injection Molding Simulations | 230 |
| 3.5 | Differences between the Actual Injection Molding Process and the Injection Molding Simulation | 236 |
| | Literature | 243 |
| | Index | 251 |

Preface

As development times for plastic molded parts become shorter and the limits of the production of corresponding molded parts are pushed further and further, the amount of simulation during the development of molded parts and molds is increasing. The molded parts and manufacturing processes are further optimized from the very beginning, so that fewer iteration loops have to be performed in production before saleable molded parts can be produced.

This book provides a guide and accompanies product developers and mold designers. For this purpose, it provides an insight into the background of injection molding simulation in general. Different programs are presented and compared on the basis of various molded parts in order to demonstrate the possibilities of the respective programs and to point out problems that can occur during the running of an injection molding simulation and the interpretation of the results, which is extremely important for the user.

The lid described in the book can be downloaded from the Hanser Verlag website (HanserPLUS) as STL and STP files. In addition, tutorials for the programs Autodesk Moldflow Insight, Moldex3D and CADMOULD are offered to provide a first introduction to the respective programs and to be able to perform and interpret first simulations independently. For the link to the download portal and the access code, see page I.

I would like to sincerely thank all the people who have contributed to the development of this book, in particular

- Carl Hanser Verlag for publishing of the book,
- SimpaTec Simulation & Technology Consulting GmbH for the inspiring discussions and the test license of the software,
- SIMCON kunststofftechnische Software GmbH for the inspiring discussions and the test license of the software, and

- the Kunststoff-Institut für die mittelständische Wirtschaft for providing the CAD data of the relay housing.

Lüdenscheid, Germany, 2023

Ruben Schlutter

The Author



Dr. Ruben Schlutter is an independent lecturer in training and further education in the field of plastics technology and simulation. He primarily teaches the subjects of injection molding simulation, structural mechanical simulation and plastic compatible part design. After studying mechanical engineering with focus on product development and design at Schmalkalden University of Applied Sciences, he earned his doctorate in a cooperative doctoral program between Chemnitz University of Technology and Schmalkalden University of Applied Sciences under Prof. Dr. Michael Gehde and Prof. Dr. Thomas Seul in the subject area of pressure loss analysis in injection

molding simulation. After completing his doctorate, he moved to the Kunststoff-Institut für die mittelständische Wirtschaft (Plastics Institute for SMEs, KIMW) in Lüdenscheid. There he supervised various research and development projects, such as the internationalization of the existing network or injection molding in the environment of Industry 4.0 (MONSOON). In 2018, he moved to the non-profit research GmbH and supervised projects on the production and use of biocidal nanoparticles and the development of a non-destructive testing method for the qualitative assessment of the foam structure of plastic molded parts. At the same time, Dr. Schlutter was involved in the further training courses offered by the Kunststoff-Institut in the main areas of form and position tolerances, plastic-compatible molded part design and plastic tolerancing in accordance with ISO 20457. Since 2022, he has been an independent lecturer and a member of the Association of German Moldmakers and Toolmakers (VDWF).

1

Overview of Finite Elements Analysis

1.1 Introduction

Application areas are converging more and more as the use of CAx systems becomes more widespread. Thus, both the shaping (industrial design) and the actual product are increasingly being developed in parallel. Subsequent usage behavior, maintainability and recyclability of the product are the focus of today's growing discussion about the sustainability of products and are increasingly being mapped in simulations. Mechatronics combines mechanical effects and objects with electrical, electronic and information technology effects and objects, with the variety and number of mechatronic products increasing rapidly, as the growth of products in the entertainment and communications industries impressively shows.

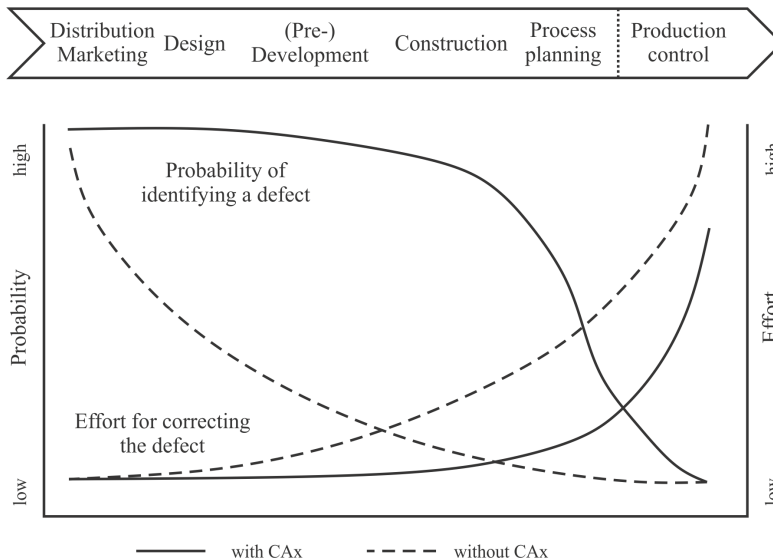


Figure 1.1 Error detection and troubleshooting (author's own figure, based on [VWZ+18])

The goal when using CAx technologies is always to make relevant decisions at the latest possible point in time during the creation of a product and to consider as many influencing factors as possible. Findings from areas other than product development are incorporated into the decision-making process. Various alternatives are simulated and evaluated as realistically as possible (see Figure 1.1). The use of CAx technologies makes it possible to identify many more potential defects at an earlier stage in the product development process. Errors can be eliminated with less effort than when CAx technologies are not used. Figure 1.1 illustrates this effect [VWZ+18].

■ 1.2 Applications of Finite Elements Analysis

In principle, any physical or chemical problem can be considered and solved by a finite elements analysis (FEA), which can be described in terms of time- and location-dependent differential equations or an equivalent variational principle. Several well-known applications are summarized below. Most simulations using FEA focus on strength problems, potential analyses and multiphysics problems [Kle07]:

- Linear elastostatics: Hooke's material behavior ($\sigma = E \cdot \varepsilon$)
- Nonlinear elastostatics: Nonlinear material behavior (plasticity)
Geometric nonlinear problems (instability problems, large displacements at small strains)
Impulsive large deformations (crash)
Forming processes
- Linear elastodynamics: Natural vibrations
Free and forced vibrations
Random vibrations
- Nonlinear elastodynamics: Time- and displacement-dependent forces
Stability, gyroscopic motion
- Rigid body dynamics: Multibody systems (MBS)
Elastic multibody systems (EMBS)
- Elastohydrodynamics: Lubrication film
- Fatigue strength: Damage, fatigue life, crack fracture
- Aeroelasticity: Elastic structural behavior under incident flow
- Heat transfer: Steady-state and transient heat conduction

- Thermoelasticity: Mechanical stress under high temperatures
- Fluid flows: Seepage flow, velocity, pressure and temperature fields
- Electrical engineering: Electric flow field, magnetic and wave fields
- Acoustics: Sound pressure distribution, pressure surges
- Casting and molding: Injection molding, pressure casting, gravity casting
- Multiphysics: Coupled flow, temperature with elasticity

In the field of elastostatics and elastodynamics, either the differential equation of equilibrium or, alternatively, the equality of the internal and external virtual work are solved and calculated to serve as the calculation basis for the simulation. The analytical solution of both equations is not possible if the geometry is complex. Nevertheless, an approximate solution for the differential equations is possible if suitable approaches are adopted. However, the results are then no longer exact. They are approximations of the exact result.

The displacement magnitude method is usually applied to elastostatic and elastodynamic problems. The forces acting on a structure are known. What is unknown are the resulting displacements and deformations of the structure. The displacement behavior of the elements is given and the resulting system of equations is solved numerically.

Also possible, but uncommon, is the application of the force magnitude method. Here, the forces acting on a structure are unknown. As it is often easier to determine and describe the acting forces than the displacements, the displacement magnitude method has become widely accepted in practice.

Finite elements analysis is being developed further and further. In parallel, computer systems are becoming more powerful, which means that more complex system modeling and handling of field problems or multiphysics problems are becoming more and more important and increasingly broader fields of application are being opened up. For example, dynamic and elastodynamic systems are increasingly represented by multibody systems and elastic multibody systems. Field problems are mainly problems of heat conduction, potential flow and magnetism. These can be described by an identical type of differential equation. Heat conduction problems are represented by the Fourier heat conduction equation. For potential flows, Poisson's equation for potential flows is used. Magnetic force effects can be simulated using Maxwell's equation. Computational fluid dynamics (CFD) programs can model flow problems in air or water or viscous media, such as plastics [Kle07].

■ 1.3 Basics of Model Building

An essential principle of systems thinking is to represent systems and complex interrelationships by means of models. Models are simplifications and abstractions of reality. Therefore, they show only the necessary partial aspects. Thus, it is important that the models be sufficiently meaningful with respect to the situation and the problem. In all considerations, the question of usefulness and problem relevance must be asked [DH02].

Model building is used specifically to solve problems. In this process, the problem-solving process is shifted from the initial level (e.g., reality) to an abstract level, so that finding a solution is usually easier. On the abstract model level, solutions are sought and worked out with the help of abstracted models. The goal is for the solution or interpretation of the model to have as high a relevance (validity) as possible for the solution of the original (original, e.g. actual) problem. Thus, model building is an important problem-solving technique in the sense of goal-oriented simplification through reducing an (not necessarily actual) original to the necessary by abstraction (see Figure 1.2) [VWZ+18].

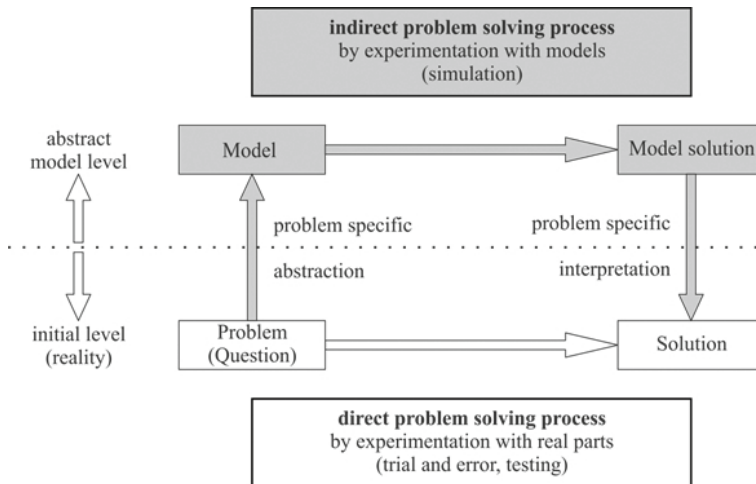


Figure 1.2 Direct and indirect problem-solving through problem-specific abstraction (author's own figure, based on [VWZ+18])

In the technical and scientific environment, a concept of reality is necessary which allows of the possibility that technical entities exist in reality and that at least a part of the truth about their reality can be represented by measurement results. Otherwise, the observation of regularities and the making of predictions about these entities are not possible. Science translates the reality observed by percep-

tions, hypotheses and modeling into symbols of a theory language, such as mathematical formalization.

In connection with theories from the hypotheses and models, scientific data about this reality arise. However, the data acquire their meaning or interpretation only in connection with the respective hypotheses and models [DH02].

1.3.1 Requirements Imposed on Models

Models must closely resemble the initial object or situation. They must correspond to characteristic properties that describe the purpose of the investigation. Given errors are usually tolerable or are consciously accepted. In product development, the purpose of the model is heavily dependent on the respective life phase of the product on which the investigation is based. A suitable cost/benefit ratio is desirable. The level of detail of the model is closely related to the effort expended on the modeling and the subsequent analysis. In many cases, a very “detailed” model is not necessary, since the uncertainties of a detailed model can be so large that its usefulness must be questioned when compared with a simpler model. A model must be clearly defined, unambiguously describable, internally consistent, free of redundancy, and manageable in order to be easily used to solve a particular task [Rod06].

In a specified domain of validity, the behavior of a model must correspond to the behavior of the actual system (model validity). This behavior is the result of the characteristic properties of the model elements as well as their interconnections. If different possibilities for modeling a system exist which satisfy the requirements mentioned above, then the simplest possibility should be given preference (model efficiency). For the creation of a simple, efficient and valid model there are no generally applicable rules. Experience and the prior knowledge of the model builder therefore play a large role [VWZ+18].

1.3.2 Methods of Model Building

In the practical application of models, various methods of model building have become established and accepted [Ise99, Rod06, HGP07].

Computational Methods

For computational methods, mathematical models are required which are described by algebraic equations, differential equations and the like. For the solution of the mathematical models, powerful numerical and symbolic software programs are available today, in addition to the traditional analytical methods. The advantage

of the computational methods is that neither real structures nor physical models are necessary. Model variants, for example, due to design changes, can be investigated with little effort. The execution of parameter studies and optimizations is comparatively simple. The idealizations and simplifications necessary for model building have a strong effect on the quality of the results.

Today, computational methods are very well developed. Nevertheless, physical experiments cannot be completely dispensed with, as the validity of the mathematical models needs to be ensured. The optimization of products, parameter studies and the establishment of general relationships (approximate solutions) are typical areas of application. CAx systems such as FEA systems, MBS simulation tools, CAD systems or computer algebra tools are used for the application.

Experimental or Measurement Methods

Experimental or measurement methods require physical, solid models for experiments. Tests, measurements and evaluations can be carried out on these. Typically, they are prototypes, test objects, test setups or scale models, which are often used in mechanical engineering. The use of physical models makes it possible to measure all significant influences.

Measurements are performed on the real structure. The recorded signals are only influenced by possible measurement errors. Only directly measurable parameters can be recorded. Internal state variables or those inaccessible to the measuring technique cannot be recorded when only this method is used. They remain hidden and this creates the problem that the overall system can only be partially recorded and described. Parameter studies are carried out to capture interrelationships. These require a great deal of effort. Experimental or measurement methods are mainly used for engine test-runs, prototype analysis, vibration monitoring, early damage detection and diagnosis, and the verification of computational results (sampling).

Hybrid Methods (Combinations of Computation and Experiment or Measurement)

These methods use both computational models and measured parameters. With computational methods, errors occur mainly due to modeling inaccuracies. With experimental methods, more or less large measurement errors cannot be ruled out. If results from the mathematical procedures and the experimental or measurement procedures are available, hypotheses can be made about the nature of the errors. The model can then be improved in such a way that better agreement between calculation and experiment is obtained. The resulting hybrid procedures are assigned to the identification procedures and are separated into parameter identification and model identification. In parameter identification, only the parameters of an existing mathematical model are reconstructed from measurement data,

while in model identification the measurement data (also) serve to set up a mathematical model itself – including its structure. These methods are widely used in control engineering and in quality control [VWZ+18].

The process for building a computer internal model for model analysis is summarized in Figure 1.3. First, the model builder develops a mental model of the original to be analyzed. This can be a real technical object or a new product. The result is the mental model (thought model). This is formalized by information elements and structures that allow it to be captured in the form of data. This “information model” is implemented on the computer (computational model, see [PBF+07, DA95]). Central relevance thereby accrues to the mental model. It already contains the necessary abstractions and represents the starting point for efficient formalization. The latter is crucial for successful implementation of the model on a computer. Usually, models are optimized in several iteration loops. Depending on the model accuracy, several iteration loops may be necessary. The further development of software, hardware and methods offers more and more possibilities. This provides important feedback on the entire model building process, which can even influence and change the original itself. This trend is impressively confirmed by the developments around cyber-physical systems or Industry 4.0 [VWZ+18].

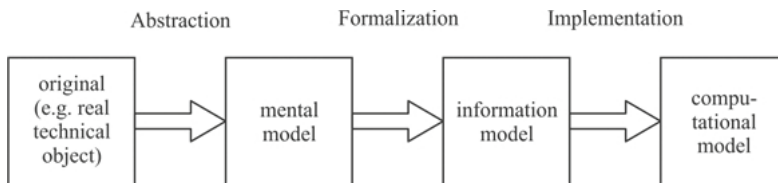


Figure 1.3 Generation of a computational model (author’s own figure, based on [VWZ+18])

1.3.3 Requirements Imposed on the Model Builder

The model builder is the person who generates the model. He therefore needs knowledge and experience both of the problem to be investigated and of model building/simulation or test and measurement methods. His working method should be systematic and method-supported in order that he may successfully meet the requirements specification. Good modeling always means “leaving out the right stuff.”

The model builder should have the following basic qualifications:

- In-depth knowledge of the system under investigation. The model builder must decide what can be neglected and is therefore not considered further in the investigations.

- Advanced knowledge and expertise of the tools and methods available for modeling and simulation or experimental and measurement methods.
- Experience in the selection of suitable models, taking into account the costs, time and informative value of the model results.
- Creativity in the generation, limitation, and definition of the model.
- Practice in interpreting results: results must be interpreted “correctly”. Among other things, it must be possible to distinguish between physical effects and artifacts (measurement errors or numerical effects).

The choice of tools for modeling depends on the task, the application area and the benefit/effort ratio. Many computer-based tools are available. Simulations are classified by the type of model used. These can be physical, numerical-analytical or graphical models. A sharp distinction between the different types of simulations is barely possible in practice. Depending on the accessibility of the calculation task, different methods are used. Different methods often complement each other synergistically. Thus, measurements on real objects can be carried out to identify model parameters or numerical models can be checked by known analytical solutions. According to this system, calculation can be understood as a simulation by means of analytical or numerical models [VWZ+18].

Simulations are carried out to answer a wide variety of questions. The following list does not claim to be complete:

- No real system is available (e.g. in the design phase).
- Experiments on the real system take too long.
- Experiments on the real system are too expensive (e.g. for a crash test).
- Experiments on the real system are too dangerous (e.g. for airplanes, power plants).
- The time constants of the real system are too large (e.g. climate models).
- The test scenarios (“load cases”) cannot be controlled.

Figure 1.4 shows the relationship between simulation and modeling. In addition to the corresponding models, solution methods and representation models are required to carry out a simulation. The common simulation systems offer extensible libraries and interfaces for importing and exporting data. Input and generation of models are done graphically and functions can be visualized.

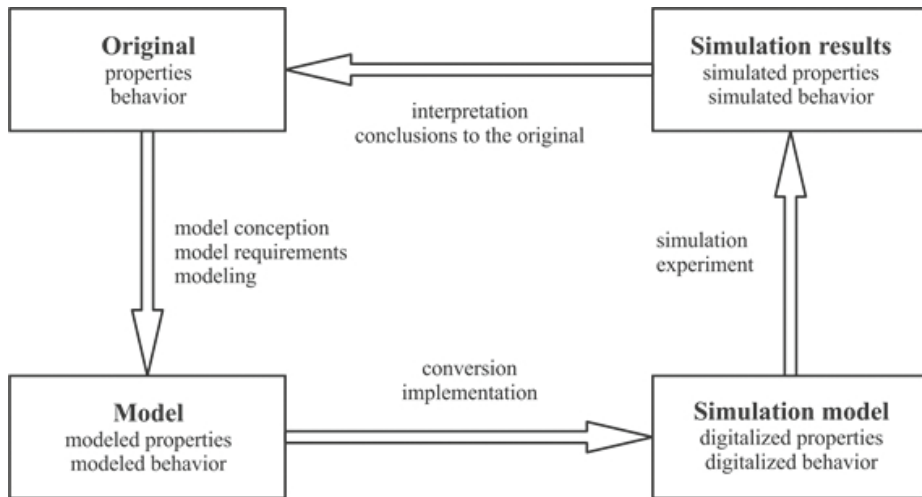


Figure 1.4 Simulation cycle with models (author’s own figure, based on [VWZ+18])

1.3.4 Model Validation and Model Verification

The terms verification and validation are described below. They must not be confused [VDI99, VDI03]. The classification of verification and validation in the modeling and simulation process is shown in Figure 1.5.

Verification

Verification checks whether the specified requirements are met by the model. The implementation of the model in the simulation software is also checked. The model is verified with the help of simple calculations. Empirical or third-party experience serves as a basis for the verification. Test calculations, such as systematic experiments or consistency checks, are used to verify whether the basic model behaves plausibly. Internal consistency is checked. If inconsistencies are found, it must be investigated whether the model is faulty or whether the fault lies in the expectations about the behavior of the real system. Verification is therefore only done for the model behavior and is independent of comparisons with the original system. Often, verification takes the form of sensitivity analyses. Individual boundary conditions, such as applied loads, geometric parameters or material parameters are changed and the behavior of the model is evaluated for plausibility. If minor changes to the described parameters lead to implausible changes in the results, the model must be critically questioned.

Validation

While verification refers to the quality of the model, validation checks whether the real system is satisfactorily simulated by the model generated. The limits of the model, meaning the range in which the model is valid, are also determined during validation. Thus, it must be ensured that the model can represent the behavior of the real system accurately enough and without errors, with regard to the investigation objectives. The question is answered as to whether the right thing was done. Special attention must be paid to the first simulation runs, as these serve to validate the simulation model. Complete agreement of the simulation model with the real system to be represented is impossible. But it is also unnecessary. Like verification, validation can also be achieved with a sensitivity analysis. The behavior of the model is examined when the load cases or individual parameters of the model are changed. In contrast to verification, validation involves a comparison with the behavior of the real system. In addition to the sensitivity analysis, plausibility checks are carried out. This examines the value ranges of the input and results data and the consistency of the physical unities in terms the real systems to be examined. It also includes a comparison with measurements on the real object or on a prototype [VWZ+18].

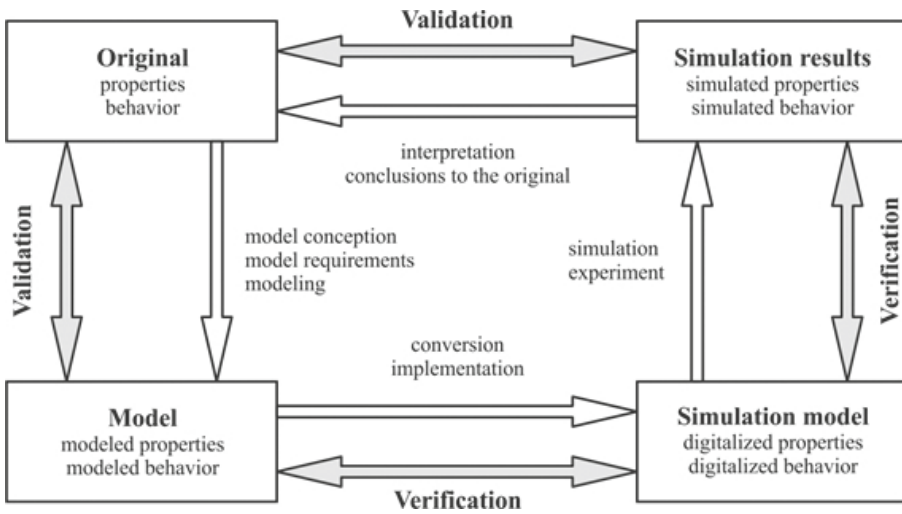


Figure 1.5 Simulation cycle with models (author's own figure, based on [VWZ+18])

■ 1.4 Finite Elements Analysis

Finite elements analysis is one of the most important numerical computational methods and is one of the most frequently used in engineering. The first applications were in physically based mathematical models of stress and deformation problems in structural mechanics. Based on this, finite elements analysis was extended to the field of continuum mechanics.

FEA is an approximation method and is used to solve problems in engineering and physics. The approximation uses mathematical models in which solid or fluid bodies are divided into elements of finite size (“finite elements”). Suitable conditions for the transitions between the individual elements must be defined at the element boundaries. It is important that the sum of all elements in connection with the transition conditions correspond to the overall model. Dividing a body into finite elements makes it possible to approximate complex geometries with “any precision”. The extreme principle selected for the computation (e.g. minimum of the potential energy) applies both to the global model and to the individual finite elements. For the solution of the computation problem, first an adequate mathematical model is selected. This is described by algebraic equations, ordinary or partial differential equations or by a combination of them. The equations can have any form and be linear or nonlinear. Both stationary (unchanging in time, in particular static) and transient (changing in time, transient, dynamic) processes or systems can be considered as problems [VWZ+18].

With the increase in performance of computer systems in recent decades, FEA has been brought to bear in many different engineering disciplines. Applications include strength calculations, the dimensioning of machine elements and the calculation of magnetic fields. FEA simulation is a numerical experiment and offers some advantages over physical experiments [VWZ+18]:

- Time and cost savings (reduction of the time and effort associated with prototype construction for planning, execution and evaluation of tests)
- Calculation proofs are increasingly required as quality proofs
- Possibility of performing cost-effective and fast variant studies and parameter variations on the computer-internal model
- Analysis of areas that are difficult or impossible to access for measurements (e.g. engine combustion chamber, blast furnace, steam turbine, parts in casting, forming or machining processes, structural elements in crash tests)
- Analysis of systems on which tests are not possible, too dangerous or too expensive (e.g. earthquake loading of large structures)
- Determination and analysis of complete two- or three-dimensional distributions of physical quantities (stresses, displacements, support reactions, etc.)

However, FEA cannot answer all questions, and so experiments are still necessary. Calculation results must be verified on real models. The computational methods are subject to continuous improvement. At present, FEA systems are mainly used in engineering disciplines. A wide variety of problems are analyzed and answered [VWZ+18].

Today, FEA systems are used intensively in almost all industries, especially in aerospace, automotive and general mechanical engineering (machine tools, steel construction, shipbuilding, etc). FEA systems are also used in the plastics, consumer goods, electrical and electronics industries.

Despite the widespread use of FEA systems in practical applications, the correct application of these systems requires a qualified engineer, usually a specialist. In the past, a distinction was made between CAD designers and FEA engineers, although today these two fields of activity are increasingly merging. Despite all the simplifications, FEA problems are not automatically solved by computers. Table 1.1 summarizes an activity analysis, showing that the computer is only the central tool, without whose performance the method would generally not be economically viable.

Table 1.1 Activity analysis for processing FE problems (source: [Kle07])

| Processing steps required | Estimated time required | Estimated computing time |
|--|-------------------------|--------------------------|
| Methodical preparation of the problem | 10% | |
| Generation of an FE model in the pre-processor | 50% | 20% |
| Computational run | | 70% |
| Results evaluation in the post-processor and documentation | 30% | 10% |
| Plausibility check | 10% | |

■ 1.5 Basic Rules for the Correct Use of FEA

To complete the introduction of finite elements analysis, some basic principles of its application will be discussed. These should be considered when preparing simulation studies, since their non-observance leads either to errors or to unnecessary rework. In practice, the applications and thus the problems that arise are naturally very complex, and so the most important sources of error are considered below [Kle07].

Index

Symbole

2.5D simulation 57
3D CAD data 57
3D meshing 227
3D model 56

A

abstract level 4
acrylonitrile-butadiene-styrene 221, 238
additives 154
air traps 178, 182
approximation method 11
aspect ratio 227
Autodesk Moldflow Insight mesher 62
automated variant analysis 199
Avrami model 170

B

balanced filling 35, 181
balancing 182
barrier screw 135
black box 211
BLM mesher 61
blow-out process 129
boundary conditions 15
burners 117

C

CADMOULD 63
calculation results 12
Carreau approach 143
cascade control 123
cavity pressure 208 f.
characteristic properties 5
chemical foaming 131
coefficient of thermal expansion 160
cold plug 240
cold runner 34
combustion streaks 117
compact injection molding 114, 228
compression molding 130
computational methods 5
computational model 7
computational scope 26
computation errors 123
computation type 26
conicity 29
conservation of energy 48
continuity equation 45
control parameters 200
convergence behavior 13
coolant temperature 235
cooling 197
cooling bores 227
cooling channels 39, 122
cooling circuits 41
cooling core 41
cooling elements 40
cooling of the plastic melt 240
cooling system 38

cooling systems close to the contour 41
 cooling time 114, 229
 – estimation 120
 cooling time and 221
 core component 127
 cores 32
 cost of correction loops 24
 crosslinking reaction 133
 Cross-WLF equation 143
 crystallization 153, 168
 cycle time 221, 224

D

degree of crystallization 169
 design of experiments 199
 design rules 28
 deviation 15
 die 35
 diesel effect 231
 differential equation 2 f., 16
 differential scanning calorimetry 151, 169
 displacement magnitude method 3
 disturbance parameters 200
 domain of validity 5
 dosing process 114
 dual-domain mesh 227
 dual-domain model 56, 58
 duromers 133, 138

E

eDesign mesher 60
 elastomers 133, 138
 element 57
 element anomalies 15
 element degeneration 13
 element division rule 13
 elements 26, 42, 54, 59, 173, 190
 embossing gap 129
 error detection 1
 experimental designs 201
 experimental method 6

F

FEA 12
 – Sources of error 13
 fiber length 165
 fiber optic sensors 214
 fiber orientation 195
 fibers 162
 filling pattern 65, 72, 78, 84, 90, 95, 101, 107, 177
 filling pressure 66 f., 73 f., 79 f., 85 f., 90 f., 95 f., 102 ff., 109 f., 183
 filling study 178
 filter model 171
 finite elements analysis 11
 flow behavior of thermosets 134
 flow front temperature 65, 72, 81, 87, 92, 97, 101, 108, 188, 233
 flow front velocity 117, 183
 fluid mechanics 44
 fluid particle 45
 force magnitude method 3
 free edges 227
 frozen areas
 – at the end of filling 68, 75, 83, 88, 94, 99, 105, 111
 – at the v/p switchover 69, 76

G

gas-assisted injection molding 128
 gas bubbles 132
 gas pressure 132
 gate 34, 37, 123
 gate location 31
 glass transition temperature 151

H

Halpin and Tsai 165
 heat transfer 49
 Hoffmann-Lauritzen model 170
 holes 32
 hot runner 34, 37, 114
 Hybrid methods 6

hydraulic pressure 237
hydraulic response time 233, 237

I

idealizations 16
identifying the origin of problems 22
indirect pressure measurement 214
influencing parameters 200
infrared spectroscopy 170
injection-compression molding 129
injection location 228
injection molding cycle 114 f.
injection molding machine 211, 227
injection molding process 151
injection molding simulation
– convenient time points 20
– workflow 24
injection pressure
– maximum 122
injection profile 117
injection speed 116, 122
injection time 114, 122, 230
injection volumetric flow 229

L

layer flow 45, 52
layout of the cooling system 39

M

magnetic-inductive flowmeter 218
manufacture of a toy monkey 126
material data 137
material database 26, 137, 145, 172, 202, 229
material properties 173
material selection 26, 171
maximum pressures 225
maximum temperature difference in cooling systems 42
measurement methods 6
mechanical properties 161
melt accumulations 28

melt conveying 136
melt cushion 115
melt decompression 229
melting 152
melting of the plastic 240
melting process 135
melt pressure 205
mesh 64
mesh build-up 13
mesher
– Autodesk Moldflow Insight 62, 77
– BLM 61, 71
– CADMOULD 63, 100, 106
– eDesign 60, 64
mesh fineness 113
mesh precision 16
mesh quality 60, 113
micromechanical approaches 165
mid-plane model 56
model 4
model building 4, 7
modeling 15
mold cavity pressure 120
mold core 43
mold material 43, 227
mold open time 114, 221, 229
mold wall temperature 121, 123
molecular orientations 140
molten core 190
momentum equation 46
MuCell process 131
multi-component injection molding 124

N

Nakamura model 170
Navier-Stokes equations 44, 55
nodes 13, 26, 37, 54 f., 57, 62, 123, 173
non-manifold edges 227

O

ohmic resistor 212
optimum process point 201
orientation 140

orientation of fibers 163
overmolding 124
overpacking 229

P

packing pressure 208, 230
packing pressure level 118
packing pressure phase 118
packing pressure profile 119
packing pressure step 118
packing pressure time 230
partner rule of the nodes 13
pause time 114
physical foaming 131
piezoelectric pressure sensor 214 f., 219
piezoresistive effect 213
piezoresistive pressure sensor 213, 215
plastic-compatible design 27
plasticized areas
– at the end of filling 69, 76
– at the v/p switchover 70, 77
plasticizing die 114
plasticizing screw 135
plastic-metal composites 31
Poisson's ratio 162
polyamide 66 221, 239
polycarbonate 221, 239
polynomial degree 16
polypropylene 221, 237
post-processing 13
post-processor 25
potential of free shaping 30
power law approach 143
pre-processing 13
pre-processor 24
pressure
– hydraulic 205
pressure buildup 206
pressure distribution 191
pressure distribution at the switchover 231
pressure peaks at the end of filling 117
pressure profile at the injection location 233, 237

pressure profiles 67, 74, 80, 86, 91, 96, 104, 111
pressure required for filling 118
pressure sensors 207, 231
process parameters 174
product development 21
product-development process 20
p-v-T chart 147

Q

quality of injection molding simulation 172
quality of the filling simulation 64

R

Rabinowitsch-Weissenberg correction 53
radii 28
reaching of the sealing point 83, 89, 94, 100
reactive injection molding 133
reality 4
resistance thermometer 215
results interpretation 176
results of the simulation 113
Reynolds number 42
ribs 29
rotary table 124
runner channels 35
runner system 34, 123

S

sandwich injection molding 127
screw antechamber 115, 208, 210, 213, 215, 222, 230, 234, 240
screw geometry 136
screw position 229, 234
sealing point 115, 122
sealing time 118
sensitivity 201
shear modulus 139, 162
shear rate 49, 53, 193

shear rate at the gate during filling 70,
77, 82, 88, 93, 99, 106, 112
shear stress 52
shell theory 58
shrinkage 115, 194
simplified conservation equations 51
simulation cycle with models 9
simulation model 227
simulation-oriented preparation 33
skin component 127
slider 124
small-angle X-ray scattering 170
solid bed 135
solids conveying 136
solver 24
solving process 13
specific heat capacity 49, 153, 155
speed-probe sensor 218
sprue bar 35
sprue bushing 35
strain gauges 213
structural-viscosity 141
structural-viscosity flow profile 60
surface layer 140
surface mesh 227
switchover 116f., 122, 208, 210, 222,
229, 231
systems thinking 4

T

Taguchi 201
Taguchi test plan 201
Tait equation 148
Tandon and Weng 165
target parameters 200, 203
temperature control unit 38
temperature distribution 189, 198
temperature of the coolant 199
temperature sensor 123, 222
test plan 203
tetrahedra 228

tetrahedral elements 58
thermal conductivity 157
thermal effusivity 121
thermocouples 215
thermoplastic foam injection molding
131
thermoplastics 138
thermosets 133, 138
threads 33
three-zone screw 135
transition temperature 148
triangular elements 57
troubleshooting 1
types of meshes 56

U

ultrasonic flowmeter 217
unbalanced filling 181
unbalanced runner 38
undercut 30, 35

V

validation 10
variant analysis in mold design 23
verification 9
viscosity 49, 141
Vogel temperature 146
volumetric filling 207

W

wall adhesion 52
wall thickness 28
warpage 115, 119
weld lines 123, 178, 188

Y

Young's modulus 162